

“MAK Euro Windoor” Plant

MAK Euro Windoor Plant, operational since 2019, has introduced advanced equipment and methods from renowned European brands such as Schüco, Weining, Elumatec, Lisec, and Fratelli Pezza. Our facility specializes in the production of top-tier PVC, aluminum, and wooden doors, windows, and facades, which have gained international recognition for their exceptional quality. With a focus on precision and excellence, we are proud to offer products that meet and exceed global standards in the industry.

Total annual capacity:

30,000 M²

PVC frame production

6,000 M²

Wooden window production

30,000 M²

Aluminum frame production

30,000 M²

Glass processing



Our technology

MAK Euro Window Plant has set a new standard in Mongolia by being the pioneering company to bring German, Austrian, and Italian technologies to the market. Through the adoption and localization of these cutting-edge methods, we have positioned ourselves as the leading manufacturer of top-quality windows, doors, and facades. Our commitment to excellence has allowed us to establish eight significant competitive advantages, solidifying our position as a frontrunner in the industry.

SCHÜCO



elumatec



FPE
FRATELLI PEZZA



LiSEC



Highlight numbers

Triple pane glass
Ug value = **0.6W/M²K**

Thermal conductivity
of the frame Uf-value = **1.0 W/M²K**

Burglary
protection **SAFETY RC3** specifications



Warranty period
1 YEAR

48db Sound
insulation

Product lines



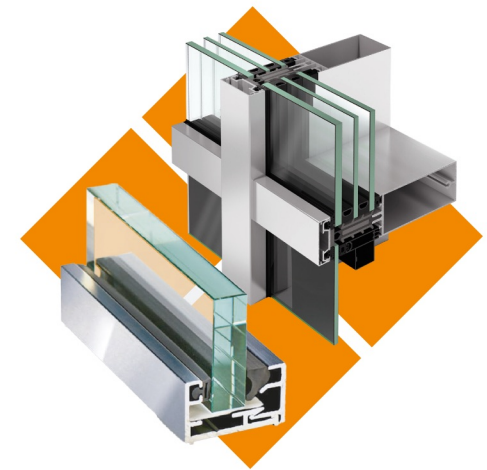
PVC doors and windows



Wooden doors and windows



Doors, windows and facades
in aluminum frame



Glass processing

PVC doors and windows

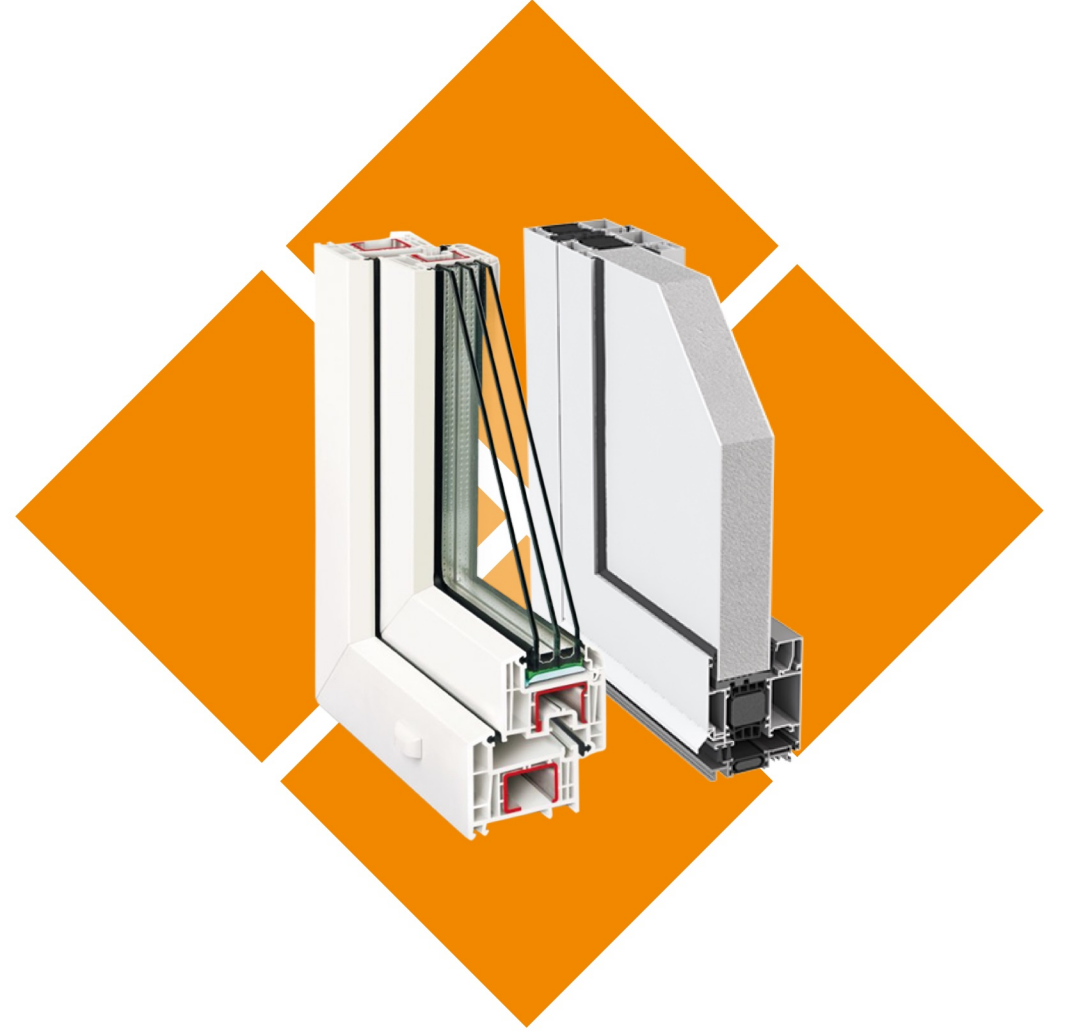
In the PVC frame and door production line at MAK Euro Window Plant, we utilize profiles sourced from renowned German brands such as Schüco and ALUPLAST, as well as ASAŞ and PROLINE. These partnerships ensure that our production process is supported by high-quality materials, allowing us to deliver exceptional PVC frames and doors to our customers.

SCHÜCO

aluplast[®]
Kunststoff-Fenstersysteme

ASAŞ

proline
PVC Pencere ve Kapı Sistemleri



Wooden doors and windows

The wooden frame and door production line at MAK Euro Windoor Plant features cutting-edge machinery sourced from Weinig Group, Germany. This advanced equipment enables us to offer an extensive selection of EU-standard wooden and aluminum composite window frames and doors in a wide range of sizes and colors. With our commitment to customer satisfaction, we can tailor our production to meet individual requirements and specifications. By combining precision craftsmanship with top-quality materials, we deliver exceptional wooden frame and door products that meet the highest standards of excellence.



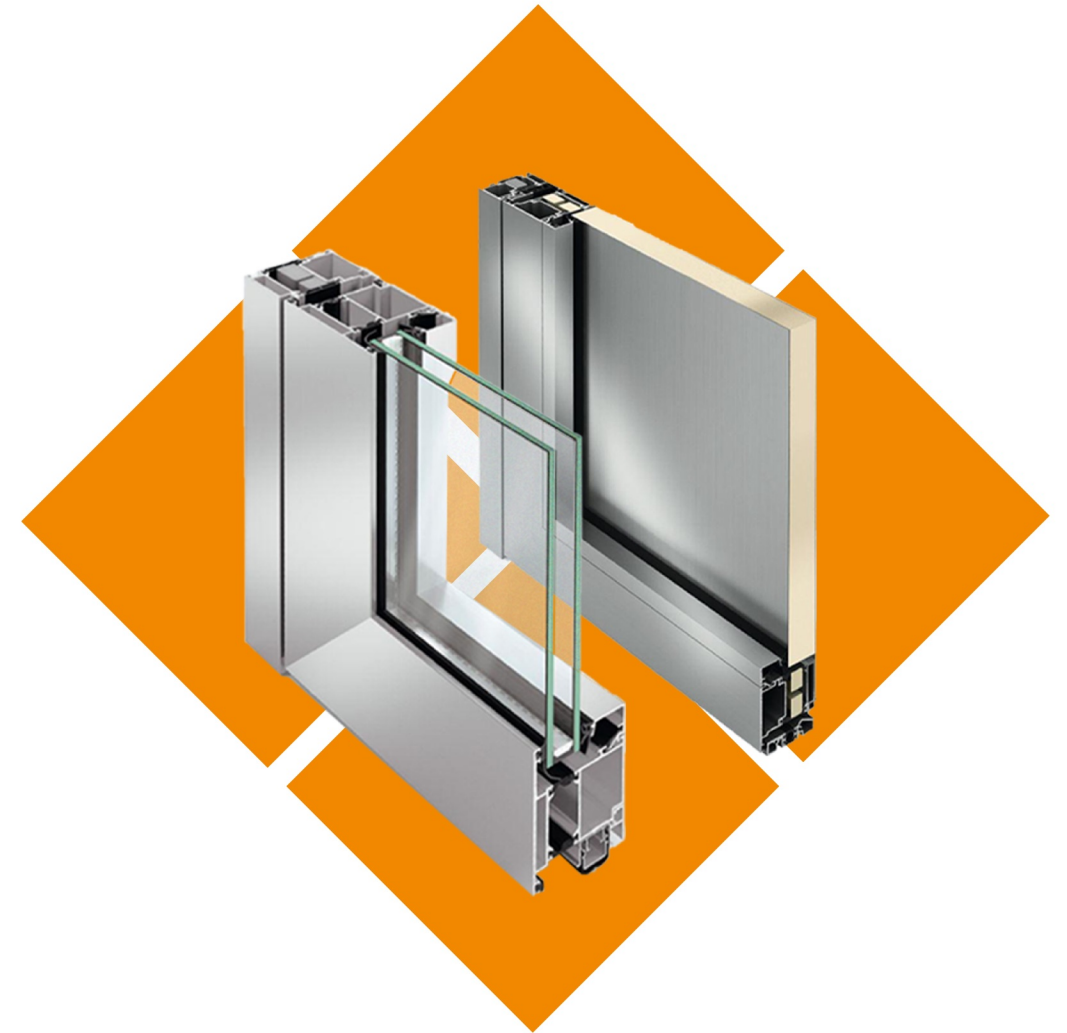
Aluminum doors, windows and facades

The aluminum frame and door production line at MAK Euro Windoor Plant is fully equipped with cutting-edge machinery from Schüco, Germany. In the manufacturing process of aluminum frames, we utilize high-quality profiles sourced from renowned brands such as ETEM from Greece and ASAŞ from Turkey. This strategic combination of advanced machinery and top-quality profiles ensures that we deliver exceptional aluminum frames and doors to our customers, meeting the highest standards of quality and durability.

SCHÜCO

ETEM

ASAŞ



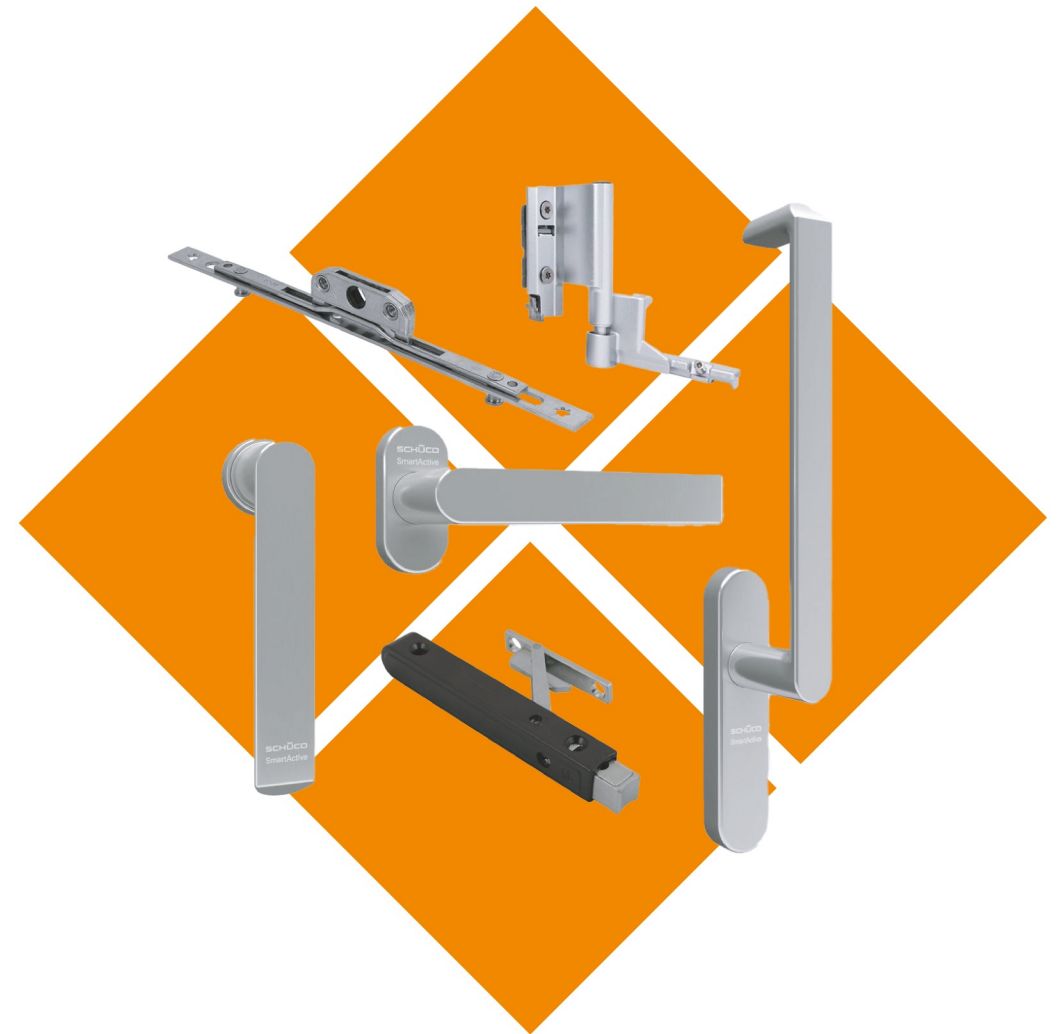
Fittings

(doors, windows, and facades)

MAK Euro Window Plant takes great care in manufacturing and fitting our products with top-quality EU-standard fittings. We source fittings from reputable brands like Schüco, Germany, and MACO, Austria, ensuring the highest level of burglary protection for our windows and doors. One notable feature we incorporate is the use of hidden hinges, which not only adds to the aesthetic appeal but also restricts unauthorized access. Our commitment to international requirements for window and door fittings is evident in our attention to detail. Additionally, our innovative design allows for a convenient night setting by

positioning the handle at a 45-degree angle, providing a distinct advantage in terms of both functionality and ease of operation.

SCHÜCO



Double and triple pane glasses and Sandblasted glasses

DOUBLE AND TRIPLE PANE GLASSES:

The glass processing line at MAK Euro Window Plant is equipped with LISEC machinery from Austria, enabling precise cutting, washing, and sealing of raw glass measuring 2400mm x 3600mm to any desired size according to customer specifications. We specialize in producing Low E, double, and triple insulated glasses, ensuring high-quality and customizable glass products for our customers.

SANDBLASTED GLASS:

Our glass processing line is equipped with the state-of-the-art Mistral EV 260 machinery from Fratelli Pezza, Italy. With this advanced equipment, we specialize in producing five distinct types of sandblasted glasses, offering a wide range of design options and customization for our customers' needs.

- ◆ REGULAR
- ◆ LIGHT
- ◆ SOLUTE
- ◆ CARVED
- ◆ PARTIAL



LISEC

ETEM

8 advantages



Standards

MAK Euro Window Plant prides itself on meeting a comprehensive set of 15 standards for its products. Among these, we successfully introduced and obtained national approval for one European standard in Mongolia. Additionally, we have implemented three ISO standards, further demonstrating our commitment to excellence and ensuring the highest quality in our manufacturing processes.



1 MNS EN

Newly confirmed MNS EN standard
by MAK Euro Window

7 MNS

National standards implemented
by MAK Euro Window

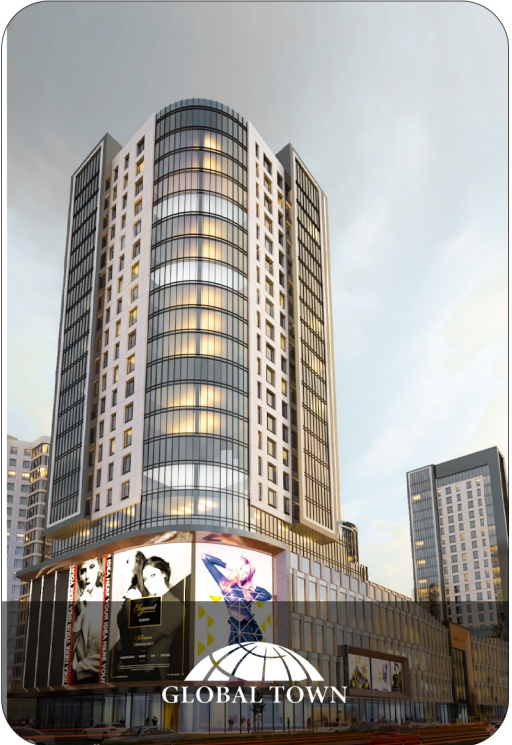
7 EN

Euro standards followed
by MAK Euro Window

3 ISO

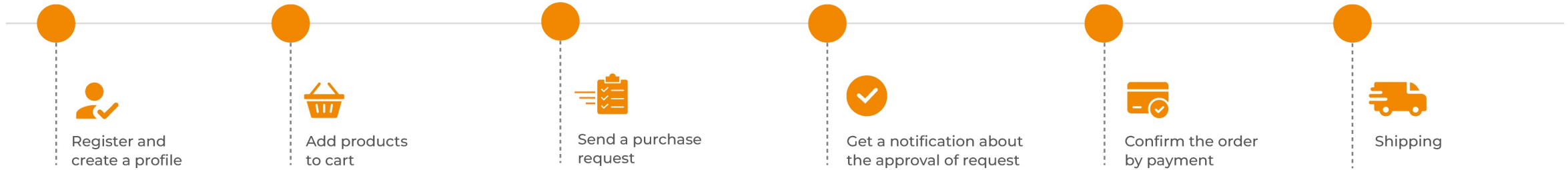
ISO standards introduced
by MAK Euro Window

Featured projects

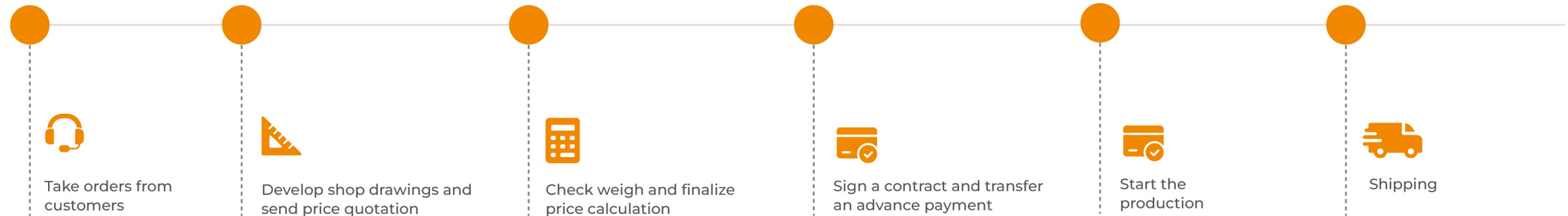


Procurement process

Order through MAKBM app



Order by phone



"MAK Euro Window" plant address

Sergelen Soum, Tuv Province 47 km from Ulaanbaatar



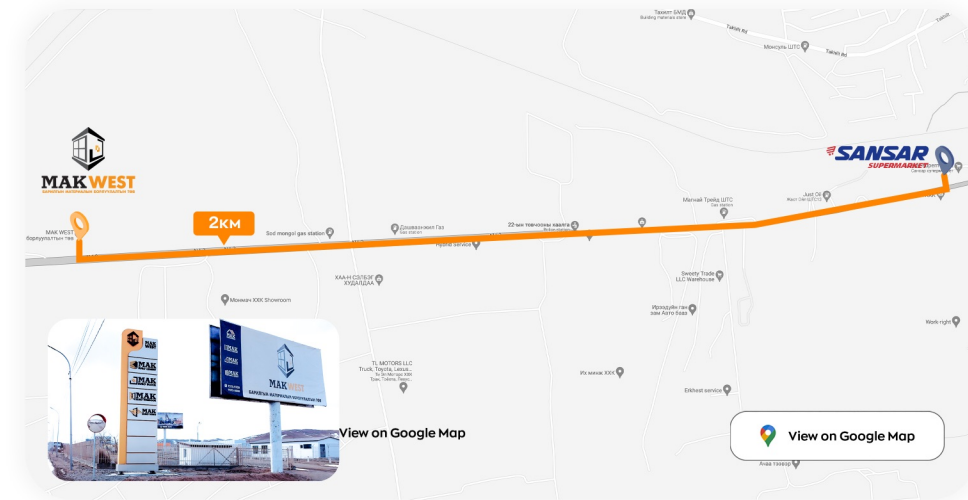
"MAK EAST" building materials store

South east of central railway repair station



"MAK WEST" building materials store

Along the bureau 22 road, 2 km from Sansar supermarket



Download
MAKBM APP:



MAK Euro Window Plant, Sergelen Soum, Tuv Province
47 km from Ulaanbaatar.

☎ 7575-9700, 9595-0000

✉ makbm@mak.mn

📘 [MAK EuroWindow](#)

🌐 makbm.mn